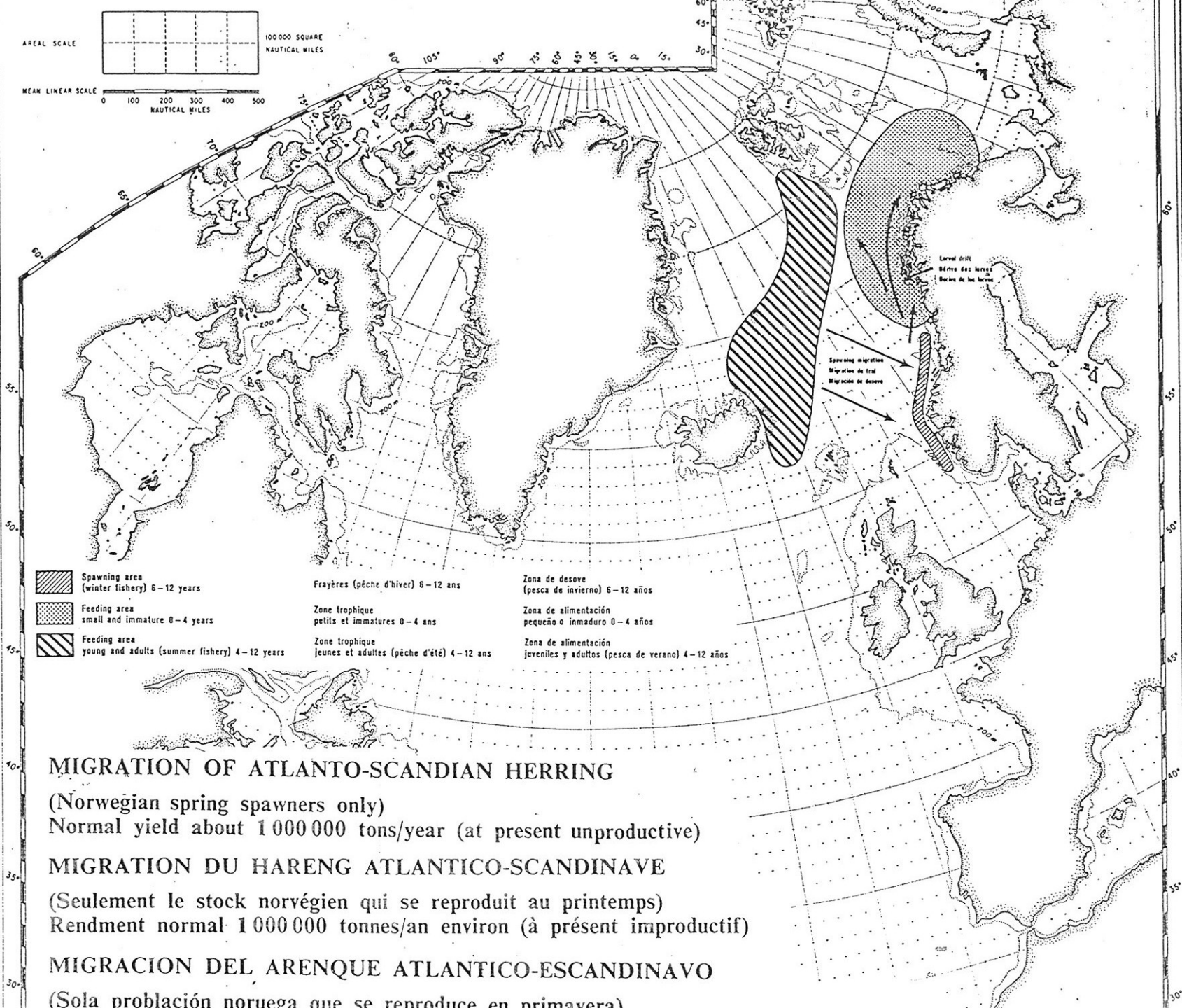




Report on Sustainable Development in the Arctic by the Icelandic MFA

- 1) International cooperation
- 2) Security
- 3) Resource development and
environmental protection
- 4) Transportation
- 5) People and cultures
- 6) Science and monitoring



MIGRATION OF ATLANTO-SCANDIAN HERRING

(Norwegian spring spawners only)

Normal yield about 1 000 000 tons/year (at present unproductive)

MIGRATION DU HARENG ATLANTICO-SCANDINAVE

(Seulement le stock norvégien qui se reproduit au printemps)

Rendment normal 1 000 000 tonnes/an environ (à présent improductif)

MIGRACION DEL ARENQUE ATLANTICO-ESCANDINAVO

(Sola población noruega que se reproduce en primavera)

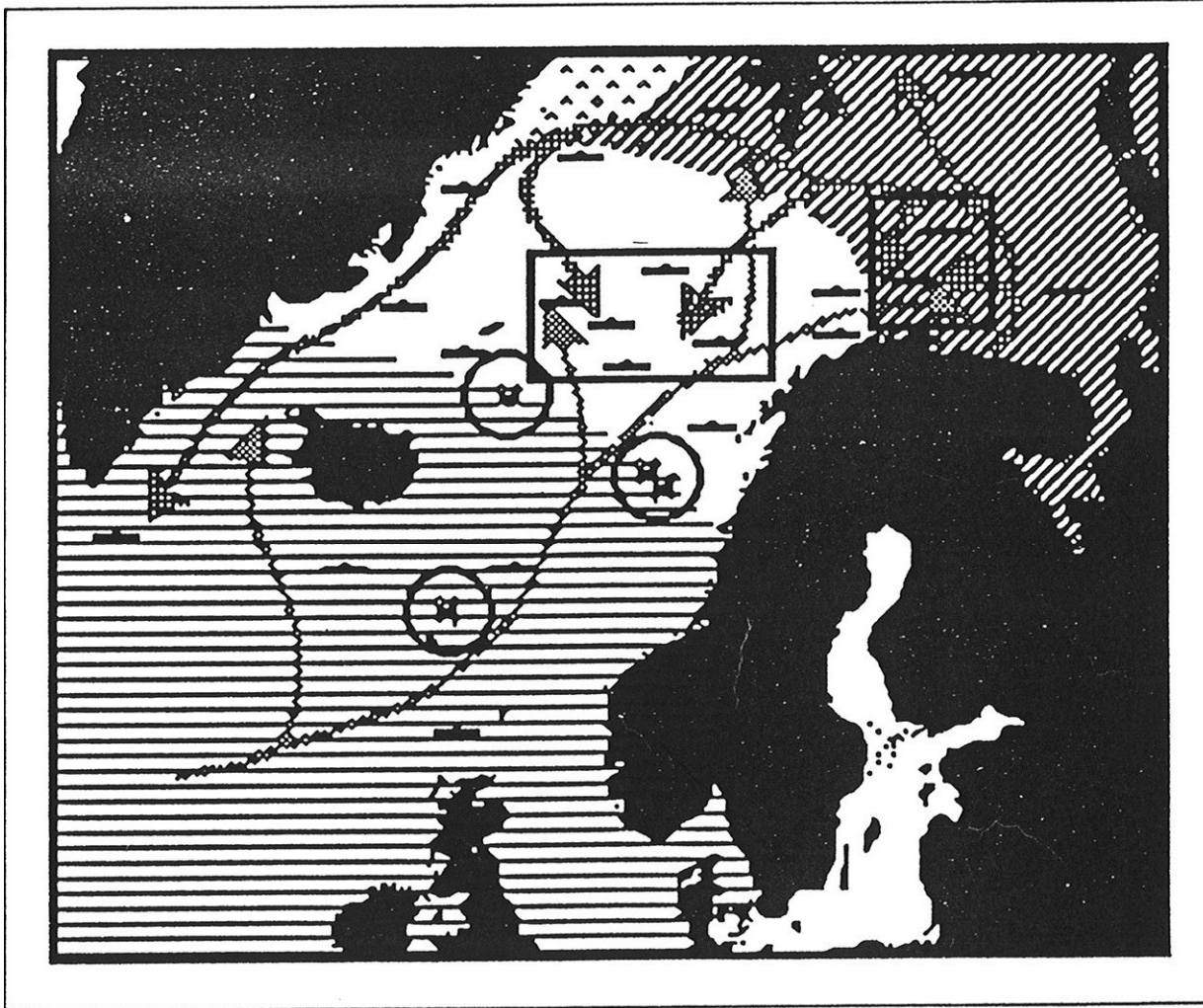
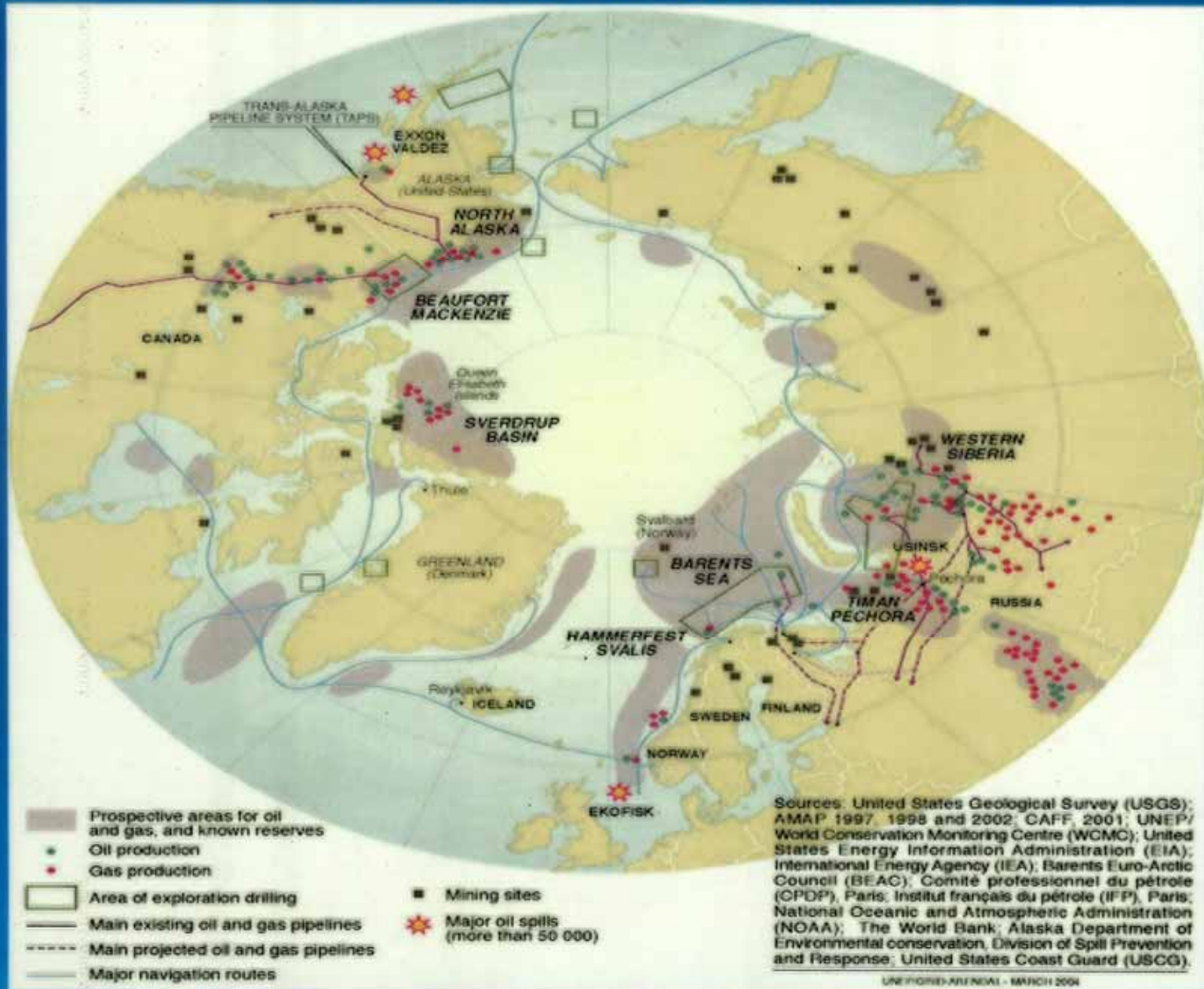


Figure 6.3. Submarine activities.

Arctic Natural Resources



The Atlantic-Arctic-Pacific Oceans Corridor

